

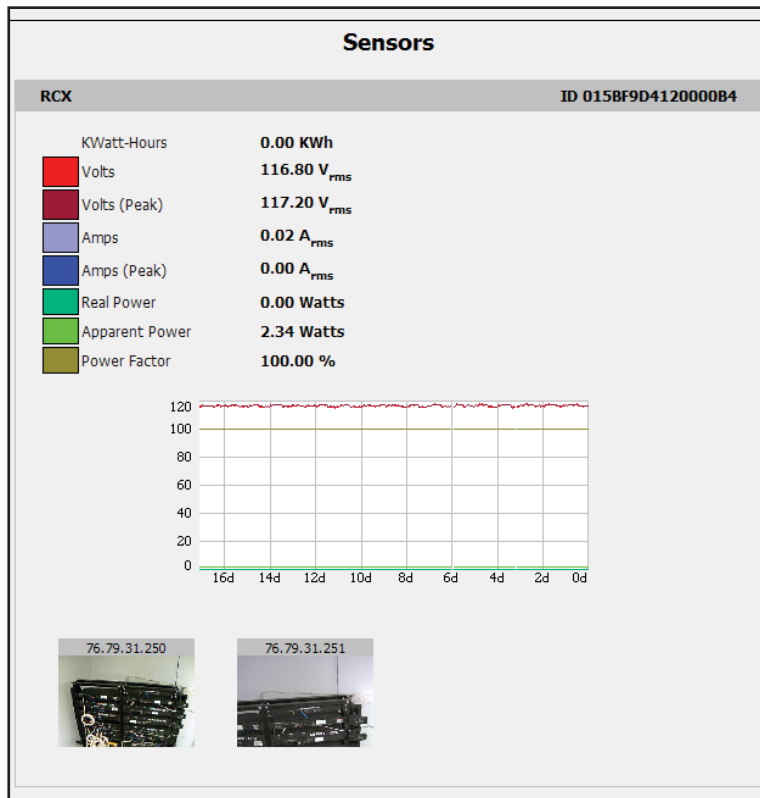
NEW Power Monitoring (GRCX) PDUs

Geist's Power Monitoring PDUs provide a comprehensive remote view of your installation's power utilization. In addition to Amps, Volts, Real Power, Apparent Power, Power Factor and kWatt-Hours, these versatile units provide jacks for optional environmental monitoring. Each of these variables can play a critical role in uptime at your site in addition to insuring energy use efficiency.

SPECIFICATION:

Ethernet Connection Jack	Software Reset Button	Internal Power Sensors
Power On Indicator	External Sensor Connection Ports	Volts RMS: 80-280 VAC
Idle Indicator	Two RJ12 Jacks	Amps RMS: 0-32A
Activity Indicator	- add up to 16 Remote Sensors	Remote Display Jack
RoHS [®] Compliant	CE [®] Compliant	

FEATURE	BENEFIT
Remote power monitoring	Prevent down-time with early notification of power threshold breach
2 Remote environmental sensor ports	Monitor temperature, air flow, humidity and dew point via connected sensors
Threshold alarms - remote & local	Convenient notification via e-mail, SNMP traps and/or local audible alarm via GRSD
Remote LCD display (GRSD)	Easily viewable power data via GRSD
Interfaces with IP web cameras	Visual monitoring of cabinet or computer room
Accessible via any web browser	Easy installation & maintenance - No external software View data graphs and analyze historical logs



ENVIRONET FACILITIES MANAGEMENT SYSTEM

Environet helps bridge the gap between IT and facilities. Whether you have a single location or multiple locations around the globe, Environet lets you monitor all of your mission critical components from anywhere. Interactive views such as global, facility, equipment, thermographic and leak detection give users immediate access to real-time information. Environet graphically details your mission critical environment, from an enterprise wide view to the smallest component within it. The flexible design expedites installations, lowers costs and minimizes maintenance. Environet integrates with leading manufacturer's systems including Geist equipment. A customized user-interface makes operation easy. www.geistif.com

GRSD2X0 DISPLAY



OPTIONAL REMOTE ENVIRONMENTAL SENSORS

- Temperature Sensor
- Temperature, Humidity & Dew Point Sensor
- Cabinet Door Position
- Water
- Smoke

NEW Power Monitoring (GRCX) PDUs

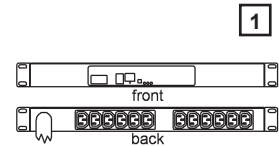
Power Monitoring
GRCXRN122-102C13C20
part #: G1189

Power Monitoring
GRCXBN302-102IN6PS6
part #: G1185

Power Monitoring
GRCXB306-103IN6PS6
part #: G1186

Power Monitoring
GRCXBN303-102IN6PS56
part #: G1187

Power Monitoring
GRCXB303-103IN6PS56
part #: G1188



LINE DRAWING	1	2	3	4	5
AMPS	16	16	32	16 x 3-	32 x 3-
VOLTS	230	230	230	230 / 400 WYE	230 / 400 WYE
OUTPUT VOLTAGE FOR 3 PHSE INPUT UNITS	N/A	N/A	N/A	230	230
TOTAL RECEPTACLE QTY	12	30	30	30	30
RECEPTACLE TYPE / QTY	C-13 / 12	C-13 / 24	C-13 / 24	C-13 / 24	C-13 / 24
RECEPTACLES PER BREAKER AND/OR PHASE	N/A	N/A	12	8	8
RECEPTACLE TYPE / QTY	N/A	C-19 / 6	C-19 / 6	C-19 / 6	C-19 / 6
RECEPTACLES PER BREAKER AND/OR PHASE	N/A	N/A	3	2	2
MAGNETIC CIRCUIT BREAKER / ON-OFF SWITCH WITH INTEGRAL GUARD	NO	NO	YES	NO	YES
BREAKER AMPERAGE / QTY	N/A	N/A	16 / 2	N/A	16 / 3
BREAKER POLE CONFIGURATION	N/A	N/A	SINGLE	N/A	DOUBLE
POWER MONITORING - AMPS, VOLTS, POWER FACTOR, KW HOURS	YES	YES	YES	YES	YES
MONITORING	AGGREGATE	AGGREGATE	CIRCUIT / BREAKER	PHASE (X,Y,Z)	PHASE / BREAKER (X,Y,Z)
ENVIRONMENTAL MONITORING - REMOTE SENSOR JACKS	2	2	2	2	2
ETHERNET CONNECTION AND LOCAL DISPLAY (RSD2X8)	YES	YES	YES	YES	YES
3M POWER CORD	1	1	1	1	1
IEC CONNECTOR	C-20	N/A	N/A	N/A	N/A
IEC PLUG 2P + E	N/A	16A, 250V	32A, 250V	N/A	N/A
IEC PLUG 3P + N + E	N/A	N/A	N/A	16A, 230/400V	32A, 230/400V
ADJUSTABLE HORIZONTAL MOUNTING BRACKETS	YES	N/A	N/A	N/A	N/A
FULL-LENGTH VERTICAL MOUNTING BRACKET	N/A	YES	YES	YES	YES
TOOLLESS MOUNTING HARDWARE CENTER TO CENTER SPACING (INCHES)	N/A	61.25 & 64.75	61.25 & 64.75	61.25 & 64.75	61.25 & 64.75
BREAKER DOGHOUSE - 37mm DEPTH	N/A	N/A	YES	N/A	YES
DIMENSIONS L (mm)	44	1683	1683	1683	1683
DIMENSIONS W	432	51	51	51	51
HEIGHT	165	58	58	58	58

