

# Basic Local Power & Current Monitoring

PM-1 & CM-3

## features & benefits

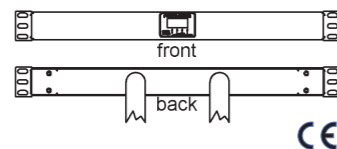
- Local power / current monitoring (digital display) - Instantaneous power & current feedback ideal for installation & maintenance



PM-1: auto-scrolling, Power Factor, Amps, Volts, Watts

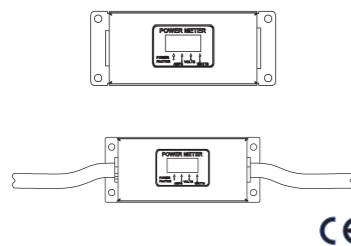


CM-3: auto-scrolling, 3 Phase Amps only meter



- GLCL-101C13-10C14R part #: G1127
- GLCL-102C19-10C20R part #: G1128
- GLCL-102PS6-10PS6R part #: G1129
- GLAL-102PS56-10PS56R part #: G1130
- GLCL-103PS6-10PS6R part #: G1131
- GLAL-103PS56-10PS56R part #: G1132

AMPS	10	16	16	16 x 3-	32	32 x 3-
VOLTS	230	230	230	230 / 400	230	230 / 400 WYE
IEC 309 INPUT SOCKET / OUTPUT CONNECTOR	C-14 / C-13	C-20 / C-19	2P+E, 16A, 250V	3P+N+E, 16A, 230/400V	2P+E, 32A, 250V	3P+N+E, 16A, 230/400V
INPUT / OUTPUT POWER LEADS	3M	3M	3M	3M	3M	3M
METER TYPE	PM-1	PM-1	PM-1	CM-3	PM-1	CM-3
DIMENSIONS H (mm)	41	41	41	41	41	41
DIMENSIONS W	432	432	432	432	432	432
DIMENSIONS D	41	41	41	41	41	41



- GLCE-001C13-00C14 part #: 12416
- GLCE-001C19-00C20 part #: G1113
- GLCE-102C19-10C20S part #: G1122
- GLCE-102PS6-10PS6S part #: G1123
- GLAE-102PS56-10PS56S part #: G1124
- GLCE-103PS6-10PS6S part #: G1125
- GLAE-103PS56-10PS56S part #: G1126

AMPS	10	16
VOLTS	230	230
IEC 309 INPUT SOCKET / OUTPUT CONNECTOR	C-14 / C-13	C-20 / C-19
INPUT / OUTPUT POWER LEADS	N/A	N/A
METER TYPE	PM-1	PM-1
DIMENSIONS H (mm)	64	64
DIMENSIONS W	159	159
DIMENSIONS D	41	41

PM-1 SPECIFICATION : +/- 2% Accuracy with Full Scale 50/60Hz sine wave input

16	16	16 x 3-	32	32 x 3-
230	230	230 / 400 WYE	230	230 / 400 WYE
C-20 / C-19	2P+E, 16A, 250V	3P+N+E, 16A, 230/400V	2P+E, 32A, 250V	3P+N+E, 32A, 230/400V
3M	3M	3M	3M	3M
PM-1	PM-1	CM-3	PM-1	CM-3
64	64	64	64	64
210	210	210	210	210
51	51	51	51	51

CM-3 SPECIFICATION : +/- 3.5% Accuracy with Full Scale 50/60Hz sine wave input



## In-Line Power Monitoring Solutions



REMOTE POWER & ENVIRONMENTAL MONITORING



LOCAL & REMOTE CURRENT MONITORING



BASIC LOCAL POWER & CURRENT MONITORING

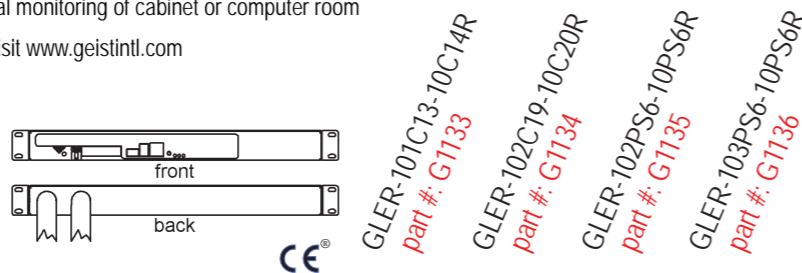
# Remote Power & Environmental Monitoring

RacSense® Master

## features & benefits

- Remote power monitoring - Prevent down-time with early notification of usage exceeding user defined limits
- 5 on-board climate sensors - Current status and trend data for environmental conditions including temperature, relative humidity, air flow, light and sound
- 4 remote climate sensor ports - Monitor temperature, air flow, humidity and dew point via connected sensors (optional)\*
- 3 I/O sensor ports - Ability to monitor contact closure devices or scale 0-5V signals such as door position, water detection (optional)\*
- Threshold alarms (remote & local) - Immediate notification via e-mail, SNMP traps and/or local audible alarm (GRSD2X8 for audible)
- Remote display (GRSD) port - Easily viewable power & climate data via GRSD2X8
- Accessible via any web browser - Simple installation, No external software to load
- Interfaces with IP web cameras - Visual monitoring of cabinet or computer room

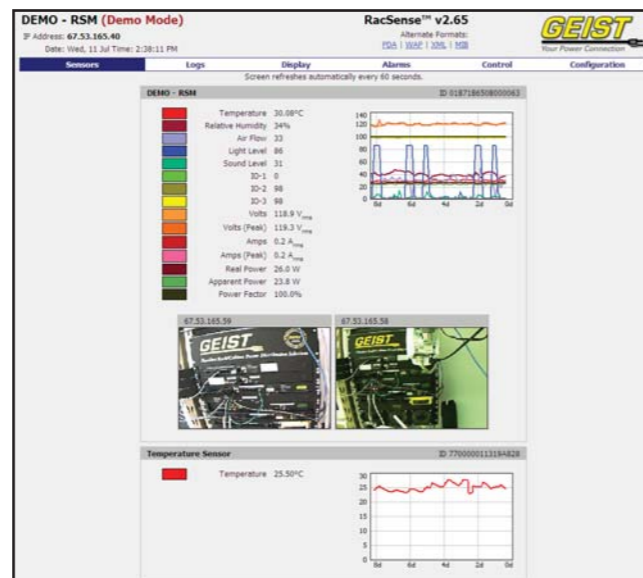
\* For a complete list of optional sensors visit [www.geistintl.com](http://www.geistintl.com)



AMPS	10	16	16	32
VOLTS	230	230	230	230
IEC 309 INPUT SOCKET / OUTPUT CONNECTOR	C-14 / C-13	C-20 / C-19	2P+E, 16A, 250V	2P+E, 32A, 250V
INPUT / OUTPUT POWER LEADS	3M	3M	3M	3M
DIMENSIONS H (mm)	44	44	44	44
DIMENSIONS W	432	432	432	432
DIMENSIONS D	114	114	114	114

### SPECIFICATION:

- Internal Power Sensors  
Volts RMS: 80-280VAC  
Amps RMS: 0-32A
- Ethernet Connection Jack
- Power On Indicator
- Idle Indicator
- Activity Indicator
- Software Reset Button
- Remote Display (RSD2X8) Connection Jack
- External Sensor Connection Ports  
- Four RJ12 Jacks  
(add up to 16 remote sensors)  
- Three I/O Ports  
- 0-5 VDC analog or contact closure
- Internal Environmental Sensors  
Temperature: -55C to 79C, +/- .5C  
Humidity: 0-100%, +/- 5%  
Air Flow: 0-99, relative  
Sound Level: 0-99, relative  
Light Level: 0-99, relative



# Local & Remote Current Monitoring

Ethernet Meter

## features & benefits

- Remote current monitoring - Prevent down-time with early notification of usage exceeding user defined limits
- Local current monitoring (digital display) - Instantaneous current feedback ideal for installation & maintenance
- SNMP traps and alarms - Integration into SNMP systems for remote notification
- User-friendly GUI interface - Quickly locate pertinent information
- IP address reset button - Ease of reconfiguration upon move or loss of IP address
- Accessible via any web browser - Simple installation, No external software to load or lose



AMPS	10	16	16	16 x 3~	32	32 x 3~
VOLTS	230	230	230	230 / 400 WYE	230	230 / 400 WYE
IEC 309 INPUT SOCKET / OUTPUT CONNECTOR	C-14 / C-13	C-20 / C-19	2P+E, 16A, 250V	3P+N+E, 16A, 230/400V	2P+E, 32A, 250V	3P+N+E, 32A, 230/400V
INPUT / OUTPUT POWER LEADS	3M	3M	3M	3M	3M	3M
DIMENSIONS H (mm)	89	89	89	89	89	89
DIMENSIONS W	312	312	312	312	312	312
DIMENSIONS D	51	51	51	51	51	51

SPECIFICATION : +/- 2% Accuracy with Full Scale 50/60Hz sine wave input

